



HEAD SHOWER WITH ARM

PRODUCT ID

P011491

FEATURES

- Stainless steel & ABS
- Chrome

INCLUDED COMPONENTS

- Inside Nominal Diameter: G 1/2
- Working pressure: 6kg
- Applicable temperature: <90°C
- Flow: 6.0 L/min
- Package: Neutral Packing
- PCS/CTN: 36pcs
- CBM/CTN: 0.09m3
- G.W./CTN: 14.6kg

FLOW RATE: L/MIN

Water pressure	1bar	1.5bar	2bar	3bar
Flow	6.6	8.3	9.35	11.4

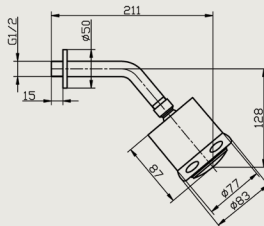
REMARKS

- Plating thickness passes AASS 24H test under lab conditions;

WARRANTY

- ROCELL BATHWARE guarantees all its Chrome plated ranges of mixers and taps for a period of 5 years and accessories 2 years from the date of purchase against defect of work or materials, except for the electronic parts and the internal components such as ceramic cartridges, handworks, headworks and thermostatic cartridges which are guaranteed for a period of 2 years.

TECHNICAL DRAWINGS



Royal Ceramics Lanka PLC.

No.20, R.A. De Mel Mawatha, Colombo 03, Sri Lanka.

☎ 076 6 223 344 ✉ info@rcl.lk 🌐 www.rocell.com

FOLLOW US



** Dimensions of fixtures are nominal and may vary within the range of tolerance. These measurements are subject to change or cancellation. No responsibility is assumed for use of superseded or voided leaflet.