

MALFUNCTION & DISPOSAL

Description	Malfunction Cause	Treatment
no water out	the battery is exhausted(DC item)	change the battery
	water supply cut off	check supply
	dirt in the filter	clean the filter
	water pressure is too low	raise the pressure
water will not turn off	dirt on the sensor window	clear the dirt
too little water flow	water supply is turned too small	adjust water supply
	the filter is too dirty	clean the filter
	water pressure is too low	raise the pressure
too much water flow	water supply is turned too high	adjust supply
	water pressure is too high	adjust pressure
short cycles of battery	incorrect batteries	change to 4AA alkaline battery
the indicator light is not on	the light is broken	change the light or circuitry board
	the circuitry board is wet or signal line is wet	dry out
	the battery is exhausted	change the battery
	poor connection of battery	check the battery connection

AFTERCARE

Whilst modern plating techniques are used in the manufacture of this product , the surface will be affected if cleaned incorrectly.

Surfaces should be maintained using a clean damp cloth ,no abrasive agents or materials should be used or come into contact with the surface finish , or this will invalidate your guarantee

INSTALLATION INSTRUCTION

## FEATURE & FUNCTION

Thank you for choosing our electronic automatic faucet.

- **WATER SAVING**

When your hands enter the sensing range ,the indicator light in the sensor window will shine ,then water flows out and stops immediately once you draw them back.

- **HYGIENIC**

Automatic on/off to free hands from any touching ,avoiding bacteria infection ,which is more convenient and hygienic.

- **INTELLIGENT**

Adopts the micro-computer controlling,the faucet can self-adjust the best detection zone and has the function of anti-light and anti-ultraviolet rays .

- **AUTOMATIC PROTECTION**

Automatically stops after 60 seconds to avoid water wasting.

If more water required,draw back your hands for 3 seconds , the water will flow out again.

- **POWER CUT AVAILABLE**

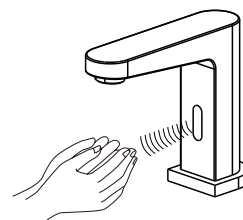
In the event of power failure,this product will automatically switch to battery power.

The automatic faucet is manufactured strictly by the ISO9001 standard.  
Our company has the right of updating the product technology.

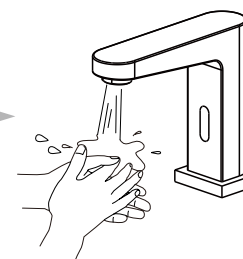
## USING METHOD & CLEAN FILTER

### Using Method

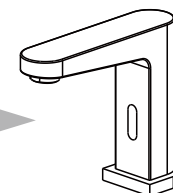
Before use:



During use:



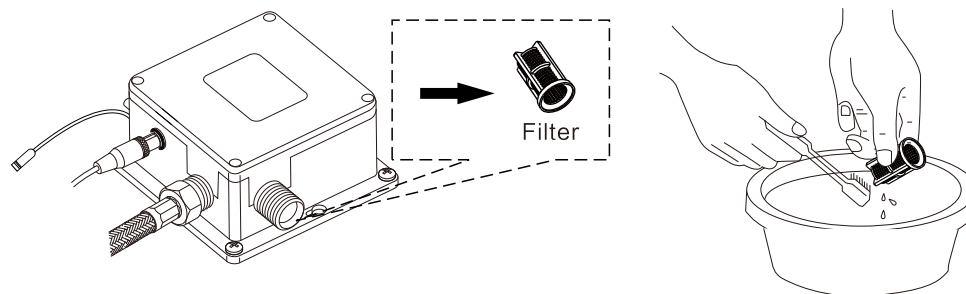
After use:



Note:when your hand enters the inductive field the water flows,remove your hand from the field and the water stops.It will stop automatically after flushing 60 seconds continuously,leave your hand from the inductive field for 3 seconds then enter the field to flush again.

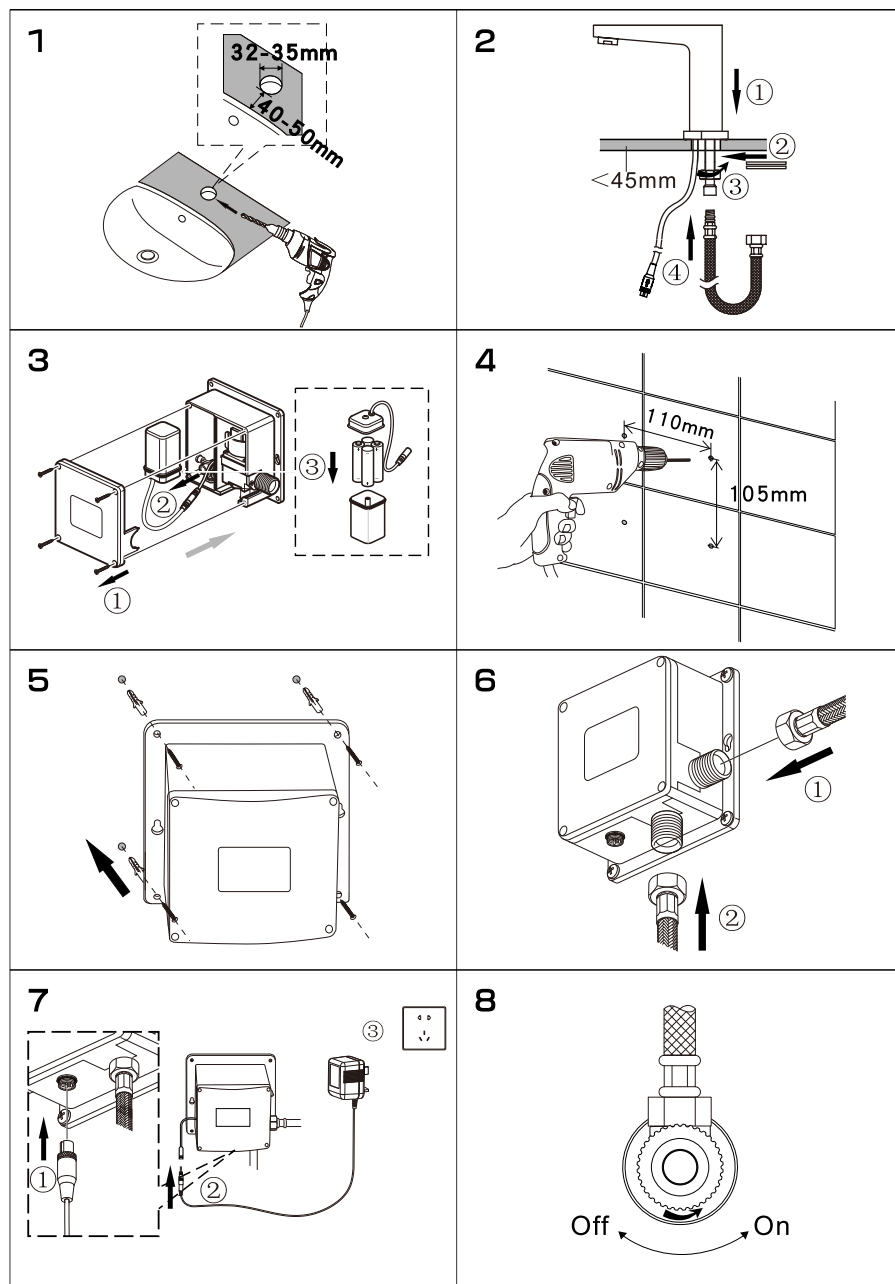
### Clean Filter

■Please ensure the filter is cleaned every 6 months or if the water flow is reduced.



Clean filter:  
(1)Turn off isolating valve.(2)Unscrew flex hose.(3)Take out filter.(4)Wash filter out and replace.

## INSTALLATION STEP

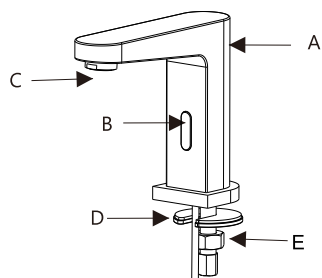


## TECHNICAL SPECIFICATION

Item No.	RB.TRC.0FA600.CB.PD
Description	Automatic Faucet
Power	DC:6V (4AA alkaline battery) AC:220V-240V;50/60HZ
Power Consumption	DC:Standby:≤0.2mW AC:Standby:≤2W;Active:≤5W
Sensing Distance	27-31CM(30×30 white board)
Water Pressure	0.05MPa-0.7MPa
Temperature	1℃-55℃
Dia.of inlet pipe	G1/2"
Flux	0. 05-0. 125L/s

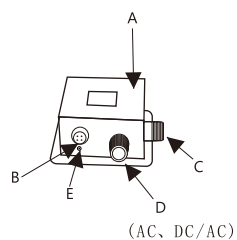
## PARTS NAME

### Faucet Body



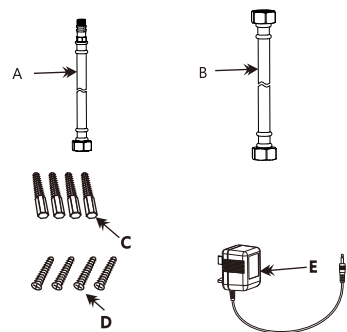
- A. Body
- B. Sensor
- C. Spout
- D: Rubber & Brass horseshoes
- E: Fixing Nut

### Control Box



- A. Plastic Control Box
- B. Mainframe connector Socket
- C. Water Inlet(with Filter)
- D. Water Outlet
- E. Transformer Connector

### Part



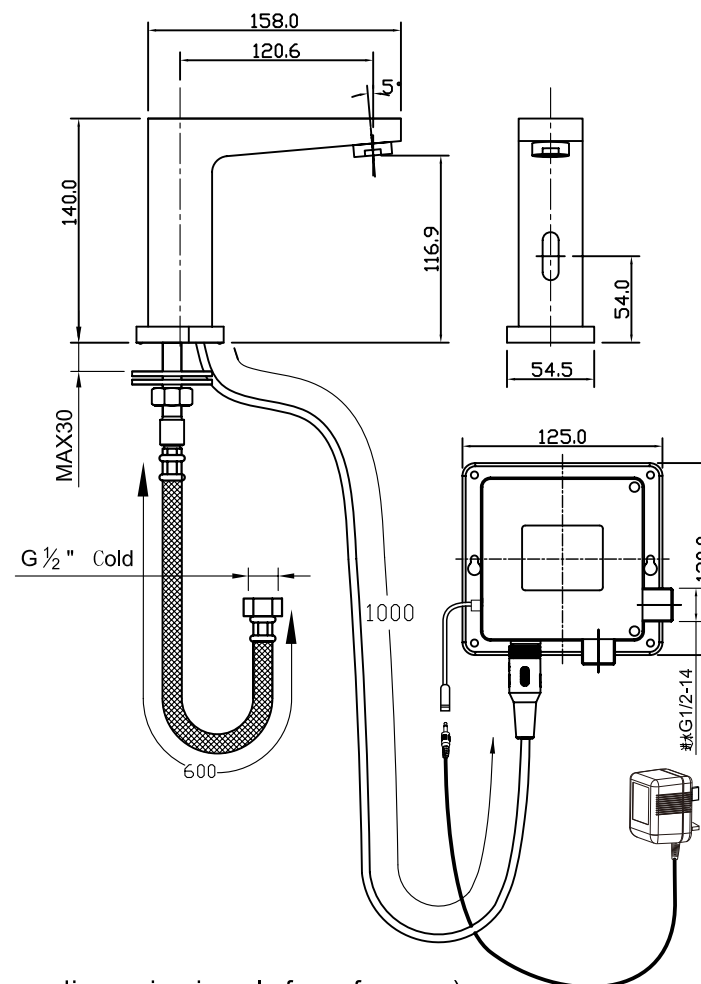
- A. Flexible Hose
- B. Water in pipe
- C. Plastic Bulged Tube
- D: Screw
- E: Transformer

## INSTALLATION MAP

### Note:

Always flush pipework before installation.

The installation place which you choose and design should be sunless and lightless.



(Above dimension is only for reference)