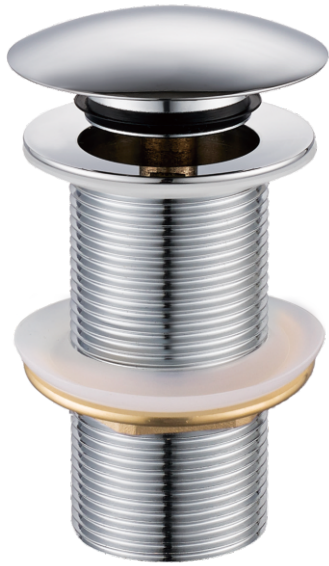


PRODUCT FACT SHEET

PRODUCT IMAGES



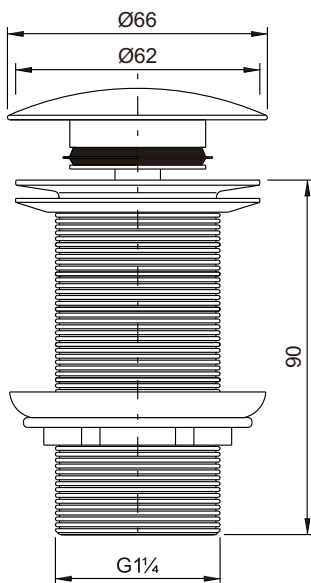
PRODUCT FEATURES :

Type: Drainer
Code: A43
Material: Brass
Finishing: Chrome

Brass waste for basin 1 1/4" clic-clac

Plating thickness passes NSS 96H test under lab conditions!

TECHNICAL DRAWING



CARE AND MAINTENANCE

1. WASH REGULARLY, DYT WITH SOFT COTTON CLOTH.
2. DONT USE PUTTY-POWDER AND POLISHING POWDER WHICH WASH WITH COARSE GRANULE.
3. DONT USE ACID WASH.
4. CLEAN THE DEPOSIT SEDIMENT REGULARLY .

HOW TO CLEAN

1. WASH USE WATER AND SOFT COTTON CLOTH.
2. USE FOLLOWING THE WASH:
 - CLIMATE LIQUIDS WASH.
 - NO COLOUR GLASS WASH.
 - SHINE WASH WITHOUT WEAR AND TEAR.
3. AFTER WASHING, USE THE WATER CLEAN, AND DRY BY SOFT COTTON CLOTH.

- IMPORTANT TO RETAIN FOR FUTURE RETAIN FOR FUTURE REFERENCE
- ACCORDING TO LOCAL PIPING AND CONTRUCTION INSTRUCTION.
- INLET PIPE NEED THE CORRECT LENGTH ACCORDING THE DISTANCE BETWN THE OUTLET HOLE AND BASIN.
- BE CAREFULLY INSTALL THE NUT AND FLAT TO AVOID SCRATCH THE BODY AND TUBE.
- BE CAREFULLY INSTALL THE RUBBERTO AVOID LEAK WATER.