

SENSO



WATER CLOSET

PRODUCT ID

(RB.SNF.03G117.01.09 / RB.TRC.0FS210.AB.PA / RB.TUN.0PA660.EL.01)

A vitreous china floor standing, close coupled, back to wall Water Closet suite with a wash down 4.5/3 litre dual flushing system. Features a horizontal outlet, two lateral holes for bottom water connection and a cistern with water inlet from the bottom.

FEATURES

- Vitreous china water closet
- Contemporary design
- Universal outlet
- Fully glazed trap way
- 100% factory vacuum tested

INCLUDED COMPONENTS

- Mounting hardware
- Seat and cover
- Bolt caps

WARRANTY

- 25 year written warranty against crazing and dunting

STANDARDS APPLICABLE

Specified model meets or exceeds the following:

- BS 3402 : 1969
- BS EN 997 : 2012
- BS EN 33 : 2011

SEAT AND SEAT COVER

Product ID - Duraplex : RB.TGN.0PA660.DU.01

- Ergonomically designed duraplex seat and cover with soft closing and quick release mechanism
- Soft close (controlled seat fall) – the seat cover closes slowly with no intervention by the user
- Seat and cover are strong, burn and scratch resistant, totally water proof
- Stainless steel hinges
- Quick release mechanism with lift off hinge design for easy cleaning
- UV protection



SENSO WATER CLOSET

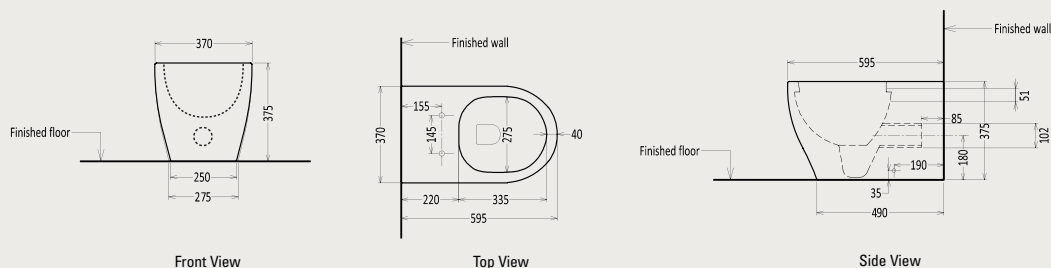
TECHNICAL INFORMATION

** Approximate measurements for comparison only

| CONFIGURATION | TWO PIECE, CLOSE COUPLED |
|--|--|
| Water per flush | 4.5L of water for solid waste and 3L of water for liquid waste |
| Water depth from rim | 175 mm |
| Trap diameter | 102-97 mm |
| Distance from floor to waste outlet centre | 85 mm |
| Distance between seat post hole centres | 145 mm |
| Weight | 28.5 kg |
| Bowl size | 340 X 275 X 175 mm |
| Nominal dimensions | 595 X 370 X 375 mm |

TECHNICAL DRAWINGS

All drawings contain the necessary measurements, which are subject to standard tolerances. They are stated in mm, are drawn on a scale of 1:20 and are non-binding. Exact measurements, in particular for customized installation scenarios, can only be taken from the finished ceramic piece.



INSTALLATION NOTES

- 97 mm - 107 mm waste outlet is required for this installation
- This toilet must be secured to the floor using the supplied floor anchors and bolts
- Install this product according to the installation guide below or scan for instructions



Royal Ceramics Lanka PLC.

No.20, R.A. De Mel Mawatha, Colombo 03, Sri Lanka.

☎ 076 6 223 344 ✉ info@rcl.lk 🌐 www.rocell.com

FOLLOW US



** Dimensions of fixtures are nominal and may vary within the range of tolerance. These measurements are subject to change or cancellation. No responsibility is assumed for use of superseded or voided leaflet.

INSTALLATION INSTRUCTIONS

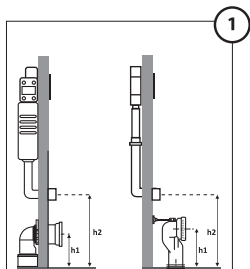
INSTRUCTIONS FOR INSTALLATION, CLEANING AND MAINTENANCE OF
FLOOR MOUNTED BACK INLET WATER CLOSETS WITH HORIZONTAL FIXING ARRANGEMENT.

Note: Please read the following instructions before starting installation work.
Check all parts against the provided parts list.

Caution: Vitreous china can be broken or easily chipped if the nuts are over-tightened or the product isn't handled with care.

SENSOFRSH

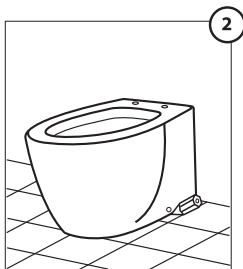
PRODUCT ID : RB.SNF.03G117.01.09



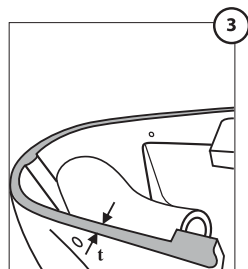
- Install the concealed tank or WC flush valve according to the instruction manual given with the product
- Connect the bend to the drainage pipe and arrange the flush valve or concealed cistern water connection according to the instruction manual provided with them

CAUTION:

Carefully measure the h1 and h2 against to the final finished floor

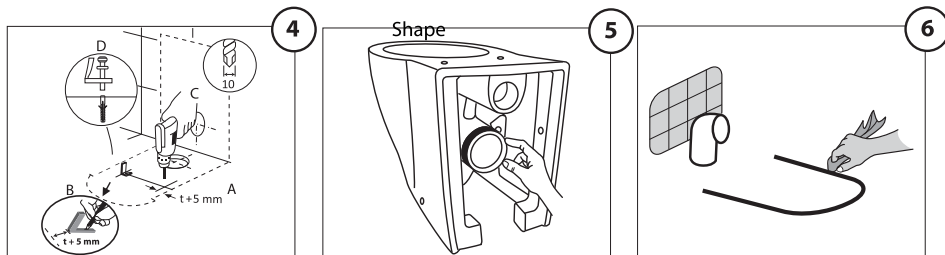


- Place water closet on the floor
- Mark the periphery and the positions parallel to the fixing holes



- Measure the thickness of the wall of the foot near to the fixing hole area (t) of the water closet as shown in the figure

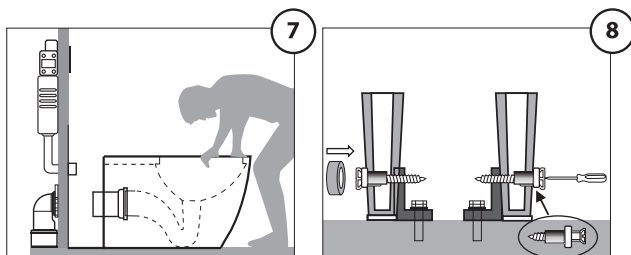
SENSO WATER CLOSET



- Fig A: From periphery line to inside, mark (t) + 5mm
- Fig B: Mark the fixing hole positions of the "L" bracket
- Fig C: Make holes using correct drill bit.
Warning: consider the pipe line under the drilling area
- Fig D: Fix the "L" brackets

- Apply the suitable lubricant around the waste outlet before connecting it to the bend

- Apply the industrial paste along the inside of the peripheral line drawn in the figure 1



- Place the suit correctly and connect the WC outlet to the drainage pipe

- Position the WC correctly and level it
- Remove the excess industrial paste
- Clean well
- Insert the screw in to the fixing holes and tighten it
- Fix the seat cover according to the given instruction

CLEANING AND MAINTENANCE



- Use correct disinfectants or detergents for cleaning. Do not use abrasive cleaners that may scratch or dull the surface.
- Carefully read the cleaner product label to ensure the cleaner is safe for use on the material.

Caution : Detergents or disinfection may cause irritation or corrosion of seat cover, hinges and accessories.

- Clean and rinse completely with water after cleaner application. Rinse and dry any over-spray that lands on nearby surfaces.
- Make sure water which is going to be used for the flushing is free from silt and minute dirt particle.

Royal Ceramics Lanka PLC.

No.20, R.A. De Mel Mawatha, Colombo 03, Sri Lanka.

☎ 076 6 223 344 ✉ info@rc.lk 🌐 www.rocell.com

FOLLOW US

