

# URBAN D



## WATER CLOSET

PRODUCT ID

(RB.URD.03G112.01.09 / RB.URD.04G104.01.04/ RB.TUD.0PA661.PP01)

A vitreous china, floor standing, close coupled, Water Closet suite with a wash down 4.5/3 litre dual flushing system. Consists of a horizontal outlet and a cistern with water inlet from the bottom.

### FEATURES

- Vitreous China water closet
- Contemporary design
- Flushing mechanism with duo water saving buttons
- Close coupled tank
- Bottom inlet
- Universal outlet
- Fully glazed trap way
- 100% factory vacuum tested

### INCLUDED COMPONENTS

- Top mounted flush actuator
- Mounting hardware
- Flushing mechanism
- Seat and cover
- Bolt caps

### WARRANTY

- 25 year written warranty against crazing and dunting

### STANDARDS APPLICABLE

Specified model meets or exceeds the following:

- BS 3402 : 1969
- AS 1976 : 1992
- BS EN 997 : 2018
- AS 1172 : 2014
- BS EN 33 : 2019
- BS EN 14055 : 2018

### SEAT AND SEAT COVER

Product ID - Polypropylene : RB.TUD.0PA661.PP01

- Seat and cover are designed using Polypropylene (also known as Thermoplastic Polymer) with soft closing
- Soft close (controlled seat fall) – the seat cover closes slowly with no intervention by the user
- Quick release mechanism for easy cleaning
- Plastic hinges

# URBAN D WATER CLOSET

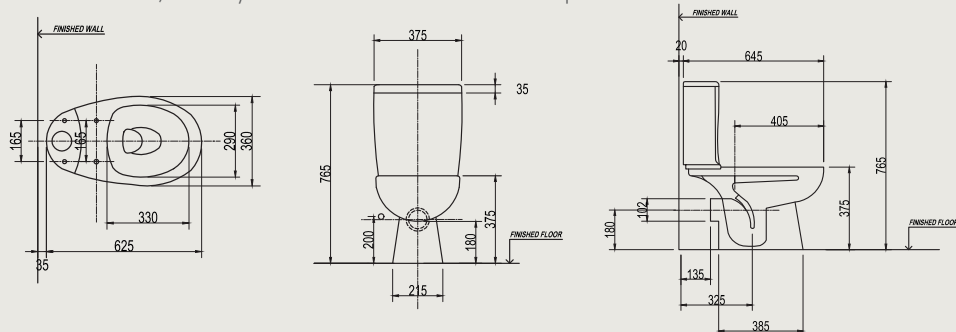
## TECHNICAL INFORMATION

\*\* Approximate measurements for comparison only

CONFIGURATION	TWO PIECE, CLOSE COUPLED
Water per flush	4.5L of water for solid waste and 3L of water for liquid waste
Water depth from rim	230 mm
Trap diameter	97-102 mm
Distance from floor to waste outlet centre	180 mm
Distance between seat post hole centres	165 mm
Weight (WC+Tank)	18 + 13 = 31 kg
Bowl Size	330 X 290 X 180 mm
Nominal Dimensions	645 X 375 X 765 mm

## TECHNICAL DRAWINGS

All drawings contain the necessary measurements, which are subject to standard tolerances. They are stated in mm, are drawn on a scale of 1:20 and are non-binding. Exact measurements, in particular for customized installation scenarios, can only be taken from the finished ceramic piece.



## INSTALLATION NOTES

- 97 mm -107 mm waste outlet is required for this installation
- 2 cm gap between the toilet and the wall is required
- This toilet must be secured to the floor using the supplied floor anchors and bolts
- Install this product according to the installation guide bellow or scan for instructions



Royal Ceramics Lanka PLC.

No.20, R.A. De Mel Mawatha, Colombo 03, Sri Lanka.

☎ 076 6 223 344 ✉ info@rcl.lk 🌐 www.rocell.com

FOLLOW US



\*\* Dimensions of fixtures are nominal and may vary within the range of tolerance. These measurements are subject to change or cancellation. No responsibility is assumed for use of superseded or voided leaflet.

## INSTALLATION INSTRUCTIONS

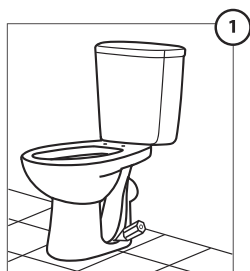
INSTRUCTIONS FOR INSTALLATION, CLEANING AND MAINTENANCE OF FLOOR MOUNTED CLOSED COUPLED WATER CLOSETS WITH VERTICAL FIXING ARRANGEMENT.

**Note:** Please read the following instructions before starting installation work.  
Check all parts against the provided parts list.

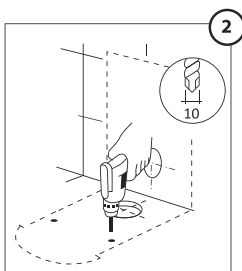
**Caution:** Vitreous china can be broken or easily chipped if the nuts are over-tightened or the product isn't handled with care.

### URBAN D

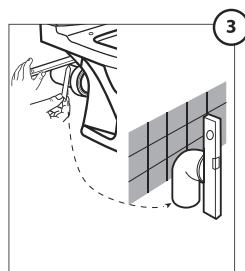
PRODUCT ID : RB.URD.03G112.01.09 / RB.URD.04G104.01.04



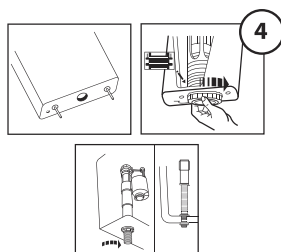
- Temporarily keep the tank with the lid on top of the WC
- Place the suit
- Mark the positions of the fixing holes and periphery



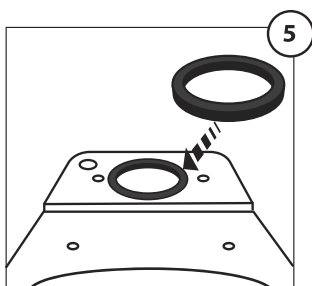
- Make a hole on the above position using concrete drill bit.
- Insert the roll plugs to the holes



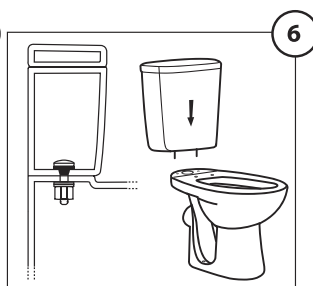
- Cut rigid bend to go inside waste draining pipe, keep minimum distance of 25mm.
- Fix the bend to draining pipe.



- Install tank fixing bolts, flushing mechanism, water inlet to tank (see provided instructions)
- Install push button (see provided instructions)



- Place rubber gasket on the WC.

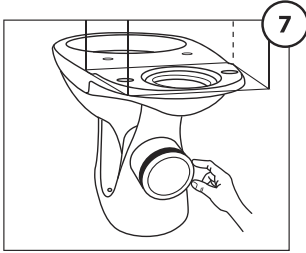


- Place tank on the WC.
- Tighten nuts to fix tank to WC (see figure).
- Place tank lid over WC.
- Fix flexible hose to water inlet.

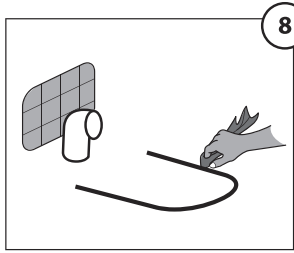
Orientation for Tank lid and Push button.



# URBAN D WATER CLOSET



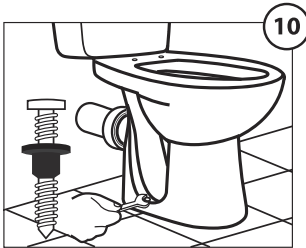
- Apply suitable lubricant around waste outlet before connecting to the bend.



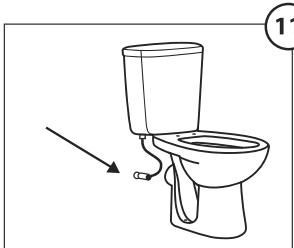
- Apply industrial paste along inside of peripheral outline on floor.



- Position suite in place
- Connect WC outlet to drainage pipe



- Level WC after proper positioning.
- Insert screw into fixing-holes and tighten.
- Remove excess industrial paste.
- Clean area well.



- Connect water inlet valve to angle valve.
- Fix seat cover (see provided instructions).

## CLEANING AND MAINTENANCE ✂

- Always use the right disinfectants or detergents.
- Do not use abrasive cleaners that may scratch or dull the surface.
- Read the cleaner product label to make sure the cleaner is safe for use on the material.

**Caution:** some detergents and disinfectants may cause corrosion or irritation of seat cover, hinges and accessories.

- After applying cleaner, make sure to clean and rinse area thoroughly with water.
- Rinse and clean any overspray that lands on nearby surfaces.
- Make sure water used for flushing is free from silt and dirt particles.

Royal Ceramics Lanka PLC.

No.20, R.A. De Mel Mawatha, Colombo 03, Sri Lanka.

☎ 076 6 223 344 ✉ info@rcl.lk 🌐 www.rocell.com

FOLLOW US



\*\* Dimensions of fixtures are nominal and may vary within the range of tolerance. These measurements are subject to change or cancellation. No responsibility is assumed for use of superseded or voided leaflet.