

# URBANITY



## WATER CLOSET

PRODUCT ID

(RB.UNY.03G109.01.08 / RB.TAB.0FS210.ME.PA / RB.TUN.0PA661.DU.01)

A vitreous china wall hung, back to wall Water Closet suite, featuring a wash down 4.5/3 litre concealed dual flushing system.

### FEATURES

- Vitreous China wall hung water closet
- Contemporary design
- Concealed flushing mechanism with duo water saving buttons
- Fully glazed trap way
- 100% factory vacuum tested

### INCLUDED COMPONENTS

- Seat and cover

### WARRANTY

- 25 year written warranty against crazing and dunting

### STANDARDS APPLICABLE

Specified model meets or exceeds the following:

- BS 3402 :1969
- AS 1976 : 1992
- BS EN 997 : 2018
- AS 1172 : 2014
- BS EN 33 : 2019
- BS EN 14055 : 2018

## SEAT AND SEAT COVER

Product ID - Duraplex : RB.TES.0PA661.DU.01

- Ergonomically designed duraplex seat and cover with soft closing and quick release mechanism
- Soft close (controlled seat fall) – the seat cover closes slowly with no intervention by the user
- Seat and cover are strong, burn and scratch resistant, totally water proof
- Stainless steel hinges
- Quick release mechanism with lift off hinge design for easy cleaning
- UV protection



# URBANITY WATER CLOSET

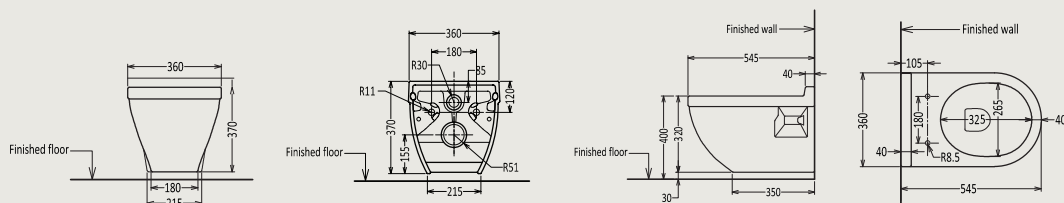
## TECHNICAL INFORMATION

\*\* Approximate measurements for comparison only

CONFIGURATION	WALL HUNG WATER CLOSET
Water per flush	4.5L of water for solid waste and 3L of water for liquid waste
Water depth from rim	205 mm
Trap diameter	97-102 mm
Distance from floor to waste outlet centre	235 mm
Distance between seat post hole centres	180 mm
Bowl Size	325 X 265 X 170 mm
Nominal Dimensions	545 X 360 X 370 mm
Weight (WC)	25 kg

## TECHNICAL DRAWINGS

All drawings contain the necessary measurements, which are subject to standard tolerances. They are stated in mm, are drawn on a scale of 1:20 and are non-binding. Exact measurements, in particular for customized installation scenarios, can only be taken from the finished ceramic piece.



## INSTALLATION NOTES

- 97 - 107 mm waste outlet is required for this installation. Waste outlet fittings are included within concealed tank unit.
- Install this product according to the installation guide below or scan for instructions



Royal Ceramics Lanka PLC.

No.20, R.A. De Mel Mawatha, Colombo 03, Sri Lanka.

☎ 076 6 223 344 ✉ info@rcl.lk 🌐 www.rocell.com

FOLLOW US



\*\* Dimensions of fixtures are nominal and may vary within the range of tolerance. These measurements are subject to change or cancellation. No responsibility is assumed for use of superseded or voided leaflet.

## INSTALLATION INSTRUCTIONS

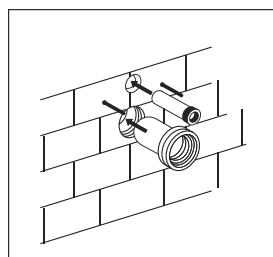
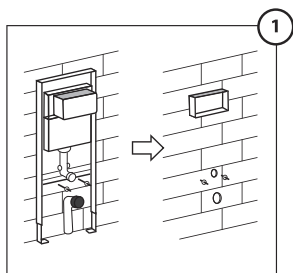
INSTRUCTIONS FOR INSTALLATION, CLEANING AND MAINTENANCE OF  
WALL HUNG WATER CLOSETS.

**Note:** Please read the following instructions before starting installation work.  
Check all parts against the provided parts list.

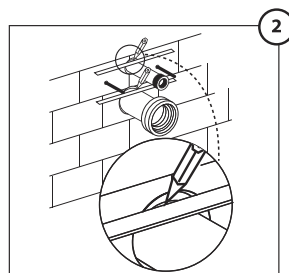
**Caution:** Vitreous china can be broken or easily chipped if the nuts are over-tightened or the product isn't handled with care.

### URBANITY

PRODUCT ID : RB.UNY.03G109.01.08



(a)

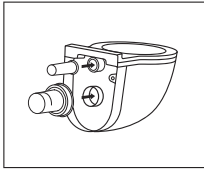


(b)

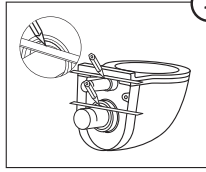
- Install the concealed tank or WC flush valve according to the instruction manual given with the product

- Fig (a) : Connect water inlet connecting pipe and waste outlet connecting pipe to the wall
- Fig (b) : keeping adequate fixing length mark the distance

# URBANITY WATER CLOSET

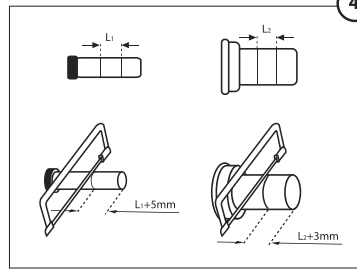


(a)



(b)

- Fig (a) : Connect water inlet connecting pipe and waste outlet connecting pipe to the water closets
- Fig (b) : keeping adequate fixing length mark the distance

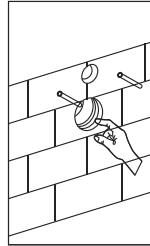


- Cut the water inlet connecting pipe and waste connecting pipe as shown in above figure

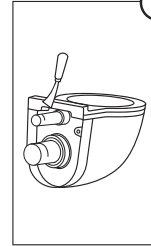
**NOTE:** With Rocell recommended concealed tank, both water inlet and waste outlet pipes are provided. If the flushing device is flush valve, connecting pipes are not provided. In this case it is advise to select compatible pipes to connect both ends and seal both ends properly. Before the wc fixing, make sure that the connecting pipes have been fixed properly and does not have any chance to leak. To prevent leakages, use proper sealant.



**NOTE:** Finish the connecting pipes edges with having angle of 45 degree.

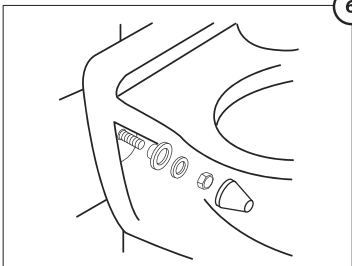


(a)



(b)

- Fig (a) : Apply the suitable lubricant around the waste outlet before connect it to the pipe
- Fig (b) : Apply the industrial paste on places where WC touches the wall



6

- Properly position the WC to connect the outlet and inlet pipes
- Fix the WC by using the correct fixing orientation as per the drawing
- Fix the seat cover according to the given instruction

## CLEANING AND MAINTENANCE ✂

- Always use the right disinfectants or detergents.
- Do not use abrasive cleaners that may scratch or dull the surface.
- Read the cleaner product label to make sure the cleaner is safe for use on the material.
- Caution:** some detergents and disinfectants may cause corrosion or irritation of seat cover, hinges and accessories.
- After applying cleaner, make sure to clean and rinse area thoroughly with water.
- Rinse and clean any overspray that lands on nearby surfaces.
- Make sure water used for flushing is free from silt and dirt particles.

Royal Ceramics Lanka PLC.

No.20, R.A. De Mel Mawatha, Colombo 03, Sri Lanka.

☎ 076 6 223 344 ✉ info@rc.lk 🌐 www.rocell.com

FOLLOW US



\*\* Dimensions of fixtures are nominal and may vary within the range of tolerance. These measurements are subject to change or cancellation. No responsibility is assumed for use of superseded or voided leaflet.