

SUMMER BLUE



WATER CLOSET

PRODUCT ID

(RB.SMB.03G119.01.10 / RB.SMB.04G104.01.05 / RB.TSB.0PA661.DU.01)

Vitreous China, floor standing, close coupled, back to wall Water Closet suite with a wash down 6/3 litre dual flushing system. Features a horizontal outlet with two lateral holes for bottom water connection, and a cistern with water inlet from the bottom.

FEATURES

- Vitreous China water closet
- Contemporary design
- Flushing mechanism with duo water saving buttons
- Close coupled tank
- Bottom inlet
- Universal outlet
- Fully glazed trap way
- 100% factory vacuum tested

INCLUDED COMPONENTS

- Top mounted flush actuator
- Mounting hardware
- Flushing mechanism
- Seat and cover
- Bolt caps

WARRANTY

- 25 year written warranty against crazing and dunting

STANDARDS APPLICABLE

- Specified model meets or exceeds the following:
- BS 3402 : 1969
 - BS EN 997 : 2012
 - BS EN 33 : 2011
 - BS EN 14055 : 2010

SEAT AND SEAT COVER

Product ID - Duraplex : RB.TSB.0PA661.DU.01

- Ergonomically designed duraplex seat and cover with soft closing and quick release mechanism
- Soft close (controlled seat fall) – the seat cover closes slowly with no intervention by the user
- Seat and cover are strong, burn and scratch resistant, totally water proof
- Stainless steel hinges
- Quick release mechanism with lift off hinge design for easy cleaning
- UV protection



SUMMER BLUE WATER CLOSET

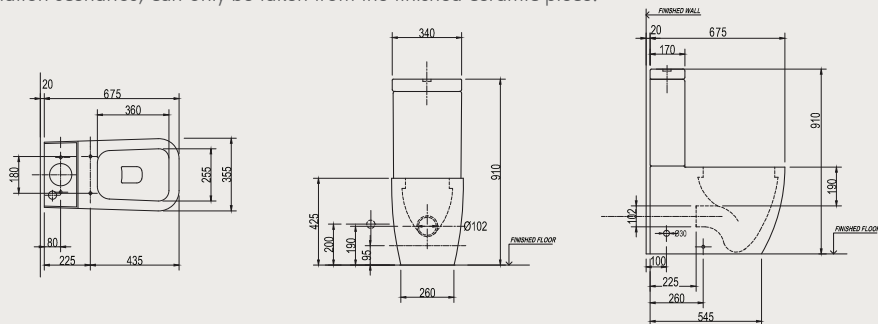
TECHNICAL INFORMATION

** Approximate measurements for comparison only

CONFIGURATION	TWO PIECE, CLOSE COUPLED
Water per flush	6L of water for solid waste and 3L of water for liquid waste
Water depth from rim	280 mm
Trap diameter	97-102 mm
Distance from floor to waste outlet centre	190 mm
Distance between seat post hole centres	180 mm
Weight (WC+Tank)	36 + 15.5 = 51.5 kg
Bowl Size	360 X 255 X 190 mm
Nominal Dimensions	675 X 355 X 910 mm

TECHNICAL DRAWINGS

All drawings contain the necessary measurements, which are subject to standard tolerances. They are stated in mm, are drawn on a scale of 1:20 and are non-binding. Exact measurements, in particular for customized installation scenarios, can only be taken from the finished ceramic piece.



INSTALLATION NOTES

- 97 mm -107 mm waste outlet is required for this installation
- 2 cm gap between the toilet and the wall is required
- This toilet must be secured to the floor using the supplied floor anchors and bolts
- Install this product according to the installation guide bellow or scan for instructions



Royal Ceramics Lanka PLC.

No.20, R.A. De Mel Mawatha, Colombo 03, Sri Lanka.

☎ 076 6 223 344 ✉ info@rc.lk 🌐 www.rocell.com

FOLLOW US



** Dimensions of fixtures are nominal and may vary within the range of tolerance. These measurements are subject to change or cancellation. No responsibility is assumed for use of superseded or voided leaflet.

SUMMER BLUE WATER CLOSET

INSTALLATION INSTRUCTIONS

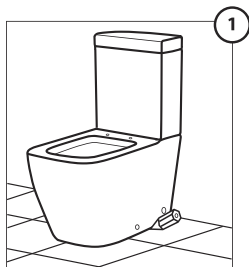
INSTRUCTIONS FOR INSTALLATION, CLEANING AND MAINTENANCE OF FLOOR MOUNTED CLOSED COUPLED WATER CLOSETS WITH HORIZONTAL FIXING ARRANGEMENT.

Note: Please read the following instructions before starting installation work.
Check all parts against the provided parts list.

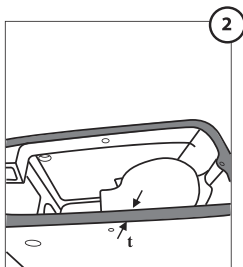
Caution: Vitreous china can be broken or easily chipped if the nuts are over-tightened or the product isn't handled with care.

SUMMER BLUE

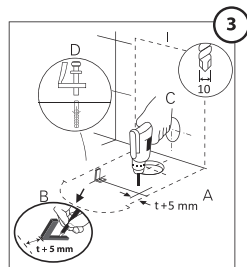
PRODUCT ID : RB.SMB.03G119.01.10 / RB.SMB.04G104.01.05



- Place complete set of water closet (with tank and lid) on floor.
- Outline periphery.
- Mark positions parallel to fixing-holes.

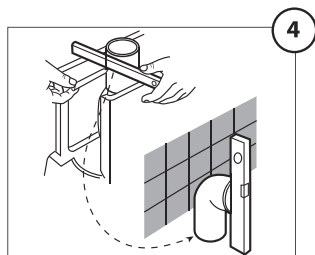


- Measure wall thickness of water closet foot near fixing-hole area (t)

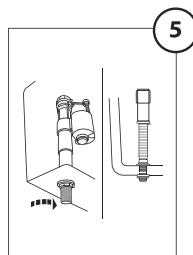
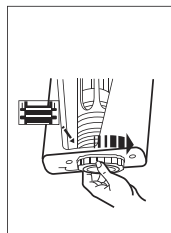
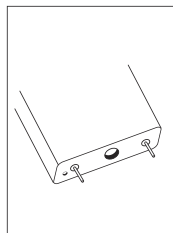


- To fix the L Brackets, see Figures A to D
Fig A : Mark from periphery line to inside : (t) + 5mm.
Fig B : Mark fixing-hole positions of L bracket.
Fig C : Drill holes into fixing-hole position.
Fig D : Fix the L brackets.

Warning: When drilling, make sure to use correct drill bit and not to damage pipeline under drilling area.



- Cut rigid bend to go inside waste draining pipe, keep minimum distance of 25mm.
- Fix the bend to draining pipe.

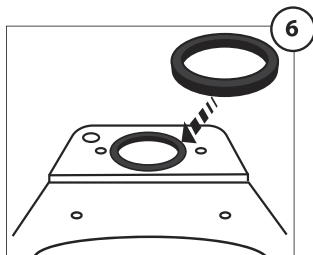


- Install tank fixing bolts, flushing mechanism, water inlet to tank (see provided instructions)
- Install push button (see provided instructions)

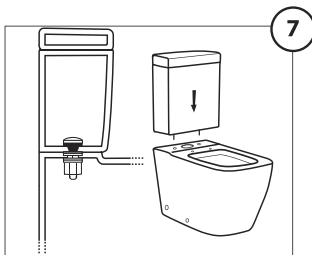
Orientation for Tank lid and Push button.



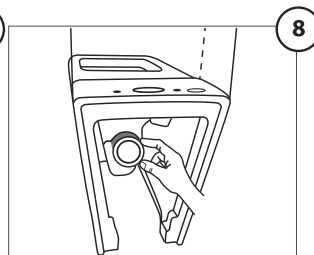
SUMMER BLUE WATER CLOSET



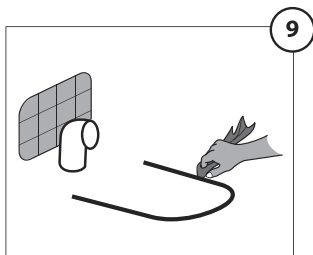
- Place rubber gasket on the WC.



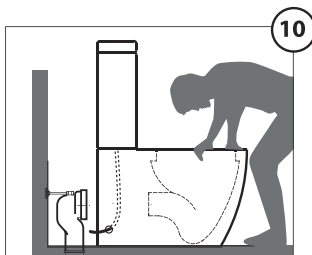
- Place tank on the WC.
- Tighten nuts to fix tank to WC (see figure).
- Place tank lid over tank.
- Fix flexible hose to water inlet.



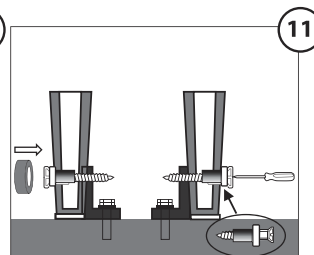
- Apply suitable lubricant around waste outlet before connecting to the bend.



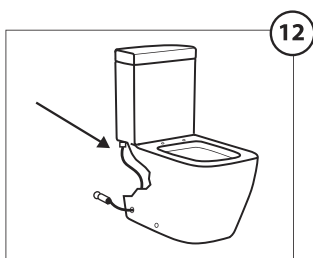
- Apply industrial paste along inside of peripheral outline on floor.



- Position suite in place
- Connect WC outlet to drainage pipe



- Level WC after proper positioning.
- Insert screw into fixing-holes and tighten.
- Remove excess industrial paste.
- Clean area well.



- Connect water inlet valve to angle valve.
- Fix seat cover (see provided instructions).

CLEANING AND MAINTENANCE ✂

- Always use the right disinfectants or detergents.
- Do not use abrasive cleaners that may scratch or dull the surface.
- Read the cleaner product label to make sure the cleaner is safe for use on the material.

Caution: some detergents and disinfectants may cause corrosion or irritation of seat cover, hinges and accessories.

- After applying cleaner, make sure to clean and rinse area thoroughly with water.
- Rinse and clean any overspray that lands on nearby surfaces.
- Make sure water used for flushing is free from silt and dirt particles.

Royal Ceramics Lanka PLC.

No.20, R.A. De Mel Mawatha, Colombo 03, Sri Lanka.

☎ 076 6 223 344 ✉ info@rcl.lk 🌐 www.rocell.com

FOLLOW US



** Dimensions of fixtures are nominal and may vary within the range of tolerance. These measurements are subject to change or cancellation. No responsibility is assumed for use of superseded or voided leaflet.