

ETERNITY



WATER CLOSET

PRODUCT ID

(RB.ETE.03G109.01.08 / RB.TAB.OFS210.ME.PA / RB.TET.OPA661.DU.01)

Vitreous China wall hung, back to wall Water Closet suite

FEATURES

- Vitreous China wall hung water closet
- Contemporary design
- Concealed flushing mechanism with duo water saving buttons
- Fully glazed trap way
- 100% factory vacuum tested

INCLUDED COMPONENTS

- Seat and cover

WARRANTY

- 25 year written warranty against crazing and dusting

STANDARDS APPLICABLE

- Specified model meets or exceeds the following:
- BS 3402 : 1969
 - BS EN 997 : 2012
 - BS EN 33 : 2011

SEAT AND SEAT COVER

Product ID - Duraplex : RB.TES.OPA661.DU.01

- Ergonomically designed duraplex seat and cover with soft closing and quick release mechanism
- Soft close (controlled seat fall) – the seat cover closes slowly with no intervention by the user
- Seat and cover are strong, burn and scratch resistant, totally water proof
- Stainless steel hinges
- Quick release mechanism with lift off hinge design for easy cleaning
- UV protection



ETERNITY WATER CLOSET

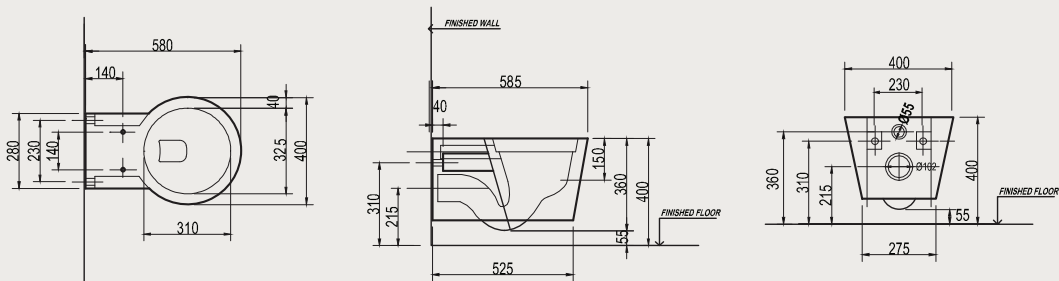
TECHNICAL INFORMATION

** Approximate measurements for comparison only

CONFIGURATION	WALL HUNG WATER CLOSET
Water per flush	6L of water for solid waste and 3L of water for liquid waste
Water depth from rim	215 mm
Trap Diameter	97 - 102 mm
Distance from floor to waste outlet centre	215 mm
Distance between seat post hole centres	140 mm
Weight (WC)	27.5 kg
Bowl Size	325 X 310 X 150 mm
Nominal Dimensions	585 X 400 X 360 mm

TECHNICAL DRAWINGS

All drawings contain the necessary measurements, which are subject to standard tolerances. They are stated in mm, are drawn on a scale of 1:20 and are non-binding. Exact measurements, in particular for customized installation scenarios, can only be taken from the finished ceramic piece.



INSTALLATION NOTES

- 97 - 107 mm waste outlet is required for this installation. Waste out let fittings are included within concealed tank unit.
- Install this product according to the installation guide bellow or scan for instructions



Royal Ceramics Lanka PLC.

No.20, R.A. De Mel Mawatha, Colombo 03, Sri Lanka.

☎ 076 6 223 344 ✉ info@rcl.lk 🌐 www.rocell.com

FOLLOW US



** Dimensions of fixtures are nominal and may vary within the range of tolerance. These measurements are subject to change or cancellation. No responsibility is assumed for use of superseded or voided leaflet.

INSTALLATION INSTRUCTIONS

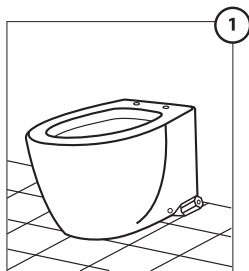
INSTRUCTIONS FOR INSTALLATION, CLEANING AND MAINTENANCE OF FLOOR MOUNTED CLOSED COUPLED WATER CLOSETS WITH HORIZONTAL FIXING ARRANGEMENT.

Note: Please read the following instructions before starting installation work.
Check all parts against the provided parts list.

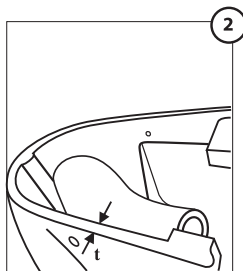
Caution: Vitreous china can be broken or easily chipped if the nuts are over-tightened or the product isn't handled with care.

ETERNITY FLOOR MOUNTED

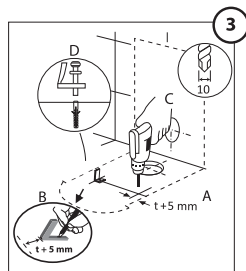
RB.ETD.03G117.01.08



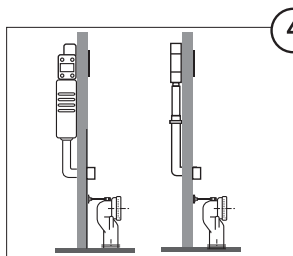
- Place water closet on the floor
- Mark the periphery and the positions parallel to the fixing holes



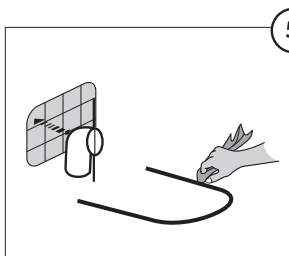
- Measure the thickness of the wall of the foot near to the fixing hole area (t) of the water closet as shown in the figure



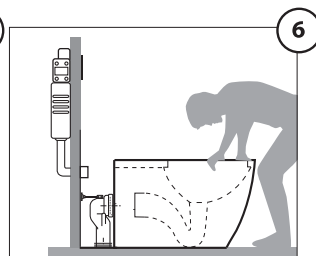
- Fig A: From periphery line to inside, mark (t) + 5mm
 - Fig B: Mark the fixing hole positions of the "L" bracket
 - Fig C: Make holes using correct drill bit. Warning: consider the pipe line under the drilling area
 - Fig D: Fix the "L" brackets



- Connect the bend to the drainage pipe
 - Arrange the flush valve or concealed cistern water connection according to the instruction manual provided with them

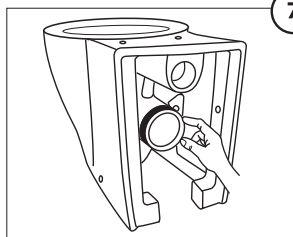


- Apply the industrial paste along the inside of the peripheral line drawn in the point 01
 - Apply the soft soap around the waste outlet before connect it to the bend

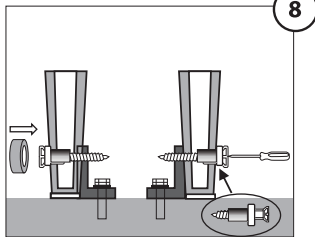


- Place the suit correctly and connect the WC outlet to the drainage pipe

ETERNITY WATER CLOSET



- Connect the bend to the drainage pipe
- Arrange the flush valve or concealed cistern water connection according to the instruction manual provided with them



- Position the WC correctly and level it
- Remove the excess industrial paste
- Clean well
- Insert the screw in to the fixing holes and tighten it

CLEANING AND MAINTENANCE



- Always use the right disinfectants or detergents.
- Do not use abrasive cleaners that may scratch or dull the surface.
- Read the cleaner product label to make sure the cleaner is safe for use on the material.
Caution: some detergents and disinfectants may cause corrosion of seat cover, hinges and accessories.
- After applying cleaner, make sure to clean and rinse area thoroughly with water.
- Rinse and clean any overspray that lands on nearby surfaces.
- Make sure water used for flushing is free from silt and dirt particles.

Royal Ceramics Lanka PLC.

No.20, R.A. De Mel Mawatha, Colombo 03, Sri Lanka.

☎ 076 6 223 344 ✉ info@rcl.lk 🌐 www.rocell.com

FOLLOW US



** Dimensions of fixtures are nominal and may vary within the range of tolerance. These measurements are subject to change or cancellation. No responsibility is assumed for use of superseded or voided leaflet.