

SLIDE DROP-IN



WASH BASIN

PRODUCT ID
(RB.SLD.01G509.01.11)

Fine fire clay, counter top (self rimming) Wash Basin with an overflow hole and a single tap hole in centre. Designed to be mounted onto a cantilevered or any chosen surface.

FEATURES

- Vitreous China wash basin
- Contemporary design
- Single tap hole in centre
- Deep bowl for comfortable use
- Front overflow hole
- Fulfills high design and quality expectations

INCLUDED COMPONENTS

- Overflow hole cover
- Faucets not included

WARRANTY

- 25 year written warranty against crazing and dunting

STANDARDS APPLICABLE

- Specified model meets or exceeds the following:
- BS 3402 : 1969
 - BS EN 14688 : 2006

TECHNICAL INFORMATION

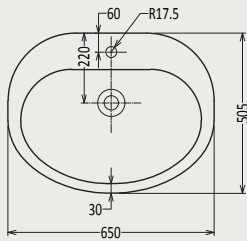
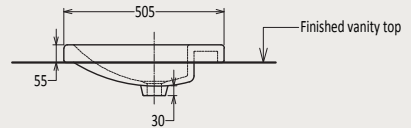
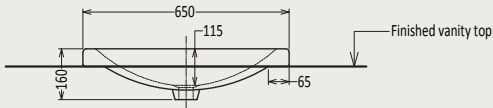
** Approximate measurements for comparison only

CONFIGURATION	ABOVE COUNTER WASH BASIN
Weight	11 kg
Basin Area	550 X 365 X 125 mm
Height - Floor to Rim	850 mm
Nominal Dimensions	655 X 515 X 168 mm
Faucet Hole	35 mm
Waste Hole	46 mm
Water Depth	125 mm

SLIDE DROP-IN WASH BASIN

TECHNICAL DRAWINGS

All drawings contain the necessary measurements, which are subject to standard tolerances. They are stated in mm, are drawn on a scale of 1:20 and are non-binding. Exact measurements, in particular for customized installation scenarios, can only be taken from the finished ceramic piece.



INSTALLATION NOTES

- Install this product according to the installation guide
- Scan for instructions



Royal Ceramics Lanka PLC.

No.20, R.A. De Mel Mawatha, Colombo 03, Sri Lanka.

☎ 076 6 223 344 ✉ info@rcl.lk 🌐 www.rocell.com

FOLLOW US



** Dimensions of fixtures are nominal and may vary within the range of tolerance. These measurements are subject to change or cancellation. No responsibility is assumed for use of superseded or voided leaflet.